

Albatros Waiter Lock for the Restaurant
Configuration and Instruction for Start-up

0 [8]



Kelloxx TMR-900

Jarltech 1300w/sw

As from: 12.02.2014 Ver. 8.9.0.2 E - Rev. 1.0.1 FNO

Albatros Waiter Lock for the Restaurant

Configuration and Instruction for Start-up

Contents

1.0	Introduction and Foreword to the Waiter Lock	2
2.0	Configuration of the Waiter Lock	3
3.0	Specifications.....	7

The Albatros Datenservice GmbH will take no responsibility for damages or losses which result from the application of this instruction.

The Albatros Datenservice GmbH will take no responsibility for losses or claims by third parties which result from the use of the charging station.

The content of this instruction might be subject to change without prior notification. This instruction cannot be part of a contract.

Assistance with all other problems:

Contact your local distributor.

Albatros Datenservice GmbH
Werftstraße 12 / Hafenkantor
76189 Karlsruhe-Rheinhafen
Phone: 0721/18349-0
Hotline 0721/18349-44
Fax: 0721/18349-33
www.albatros.net

Albatros Waiter Lock for the Restaurant

Configuration and Instruction for Start-up

2 [8]

1.0 Introduction and Foreword to the Waiter Lock

The waiter lock for the Albatros Reception / Restaurant Module is used to identify employees via magnetic chips, so-called "Dallas Chips" which can be easily integrated and which provide for a secure system. Various users (such as waiters, temporary workers, etc.) are identified via small magnetic ID chips that are incorporated into the waiter locks.



Kellogg Waiter Lock TM-900 1



Jarltech Waiter Lock 1300-s/sw

Every lock has a 16-digit number set by the manufacturer which cannot be manipulated. As soon as the magnetic contact is established by placing the chip on the device, the station will send its identification number via the keyboard or the RS-232 interface to the computer used in the restaurant. When removing the chip, another defined character string will be sent to the computer in order to block the user interface.

Consequently, your cash register system will only accept inputs as long as a valid key is attached and will lock up as soon as it is retracted. For your employees, the simple magnetic chip technology is much more convenient and faster to operate than conventional plug or key systems – especially during peak hours.

A connection cable for the RS-232 interface and a keyboard wedge are included with every waiter lock. If the lock is operated via the keyboard, the power supply will be provided by the computer. If it is operated via the port RS-232, the power adaptor included in the delivery will be used. In addition, a stable base plate for the screw adjustment of the casing is included.

Simply call us – we are happy to advise you!

Albatros Waiter Lock for the Restaurant

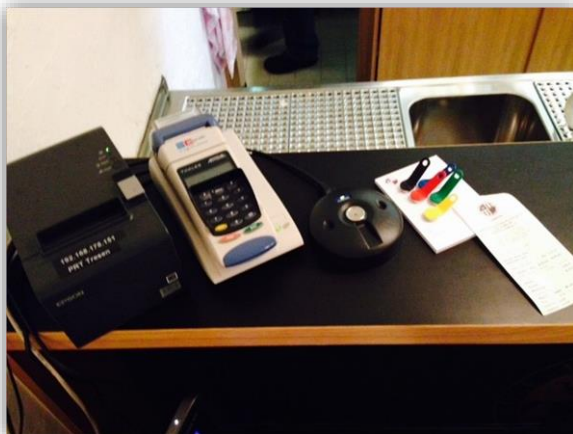
Configuration and Instruction for Start-up

3 [8]

2.0 Configuration of the Waiter Lock

1. Prior to the installation, please check whether all elements included in the delivery according to the description are indeed present.

- Waiter lock with connection cable "1".
- Extension cable for waiter lock to com-port via power connector "2".
- Power supply device for 230 volt operation "3".
- Waiter key (Dallas Chips) "4".
- Com-port cable for connection to computer "5".



2. Turn off your POS cash register system (shut down of all programs and exit the Windows operating system, no workaround by pressing the power button).

3. Connect cable number "5" to the back of the com-port of your POS cash register system. If your cash register system is not equipped with a com-port, the delivery includes a USB-serial-adapter. In case that you need the adapter, primarily connect the adapter and then follow the installation instruction until the "virtual" com-port has been installed.

4. Connect the power supply device "3" to cable number "2".

5. Connect one end of cable number "2" to cable number "1" and the other end to cable number "5".

6. Now plug the power supply device "3" into the electrical socket.

7. Turn your POS cash register system back on and log on to the Windows operating system.

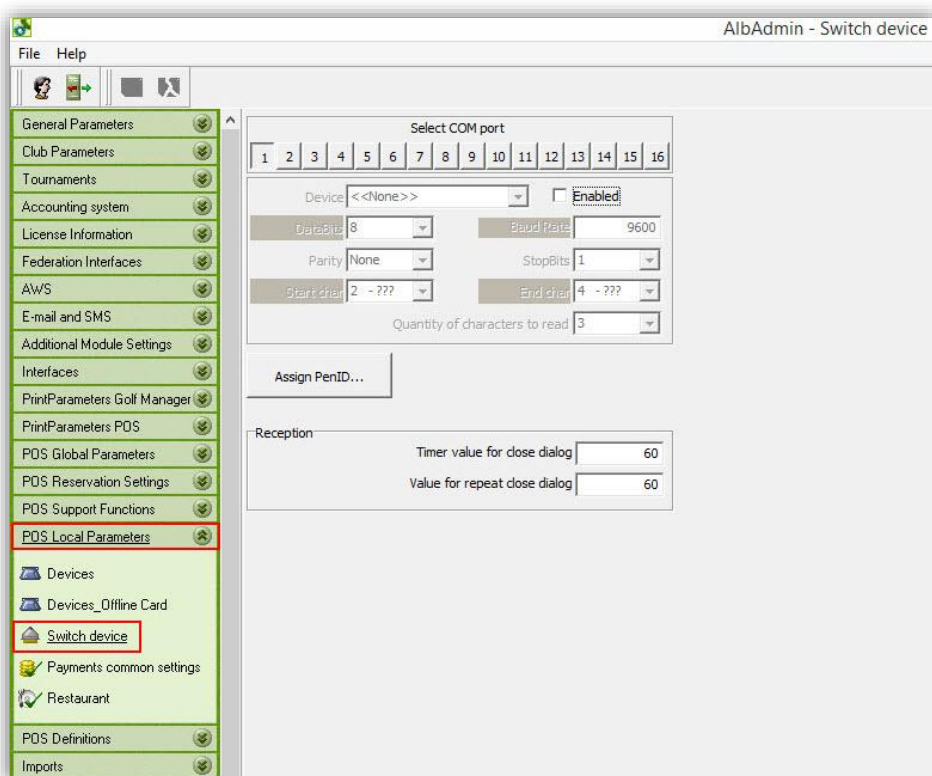
Albatros Waiter Lock for the Restaurant Configuration and Instruction for Start-up

4 [8]

8. Start the Albatros Restaurant software and log out all waiters.
9. Exit the Restaurant software.
10. Start the Albatros Administration by double-clicking on the respective desktop icon or by selecting Start – Programs – Albatros – Tools – Albatros Administration and log on as admin user.



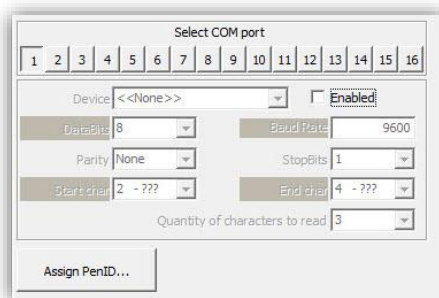
11. Choose “POS Local Parameters” from the menu bar on the left side.



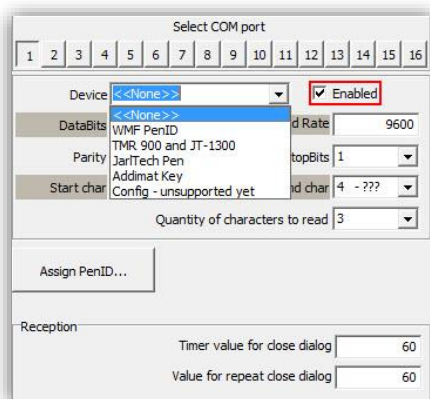
Albatros Waiter Lock for the Restaurant Configuration and Instruction for Start-up

5 [8]

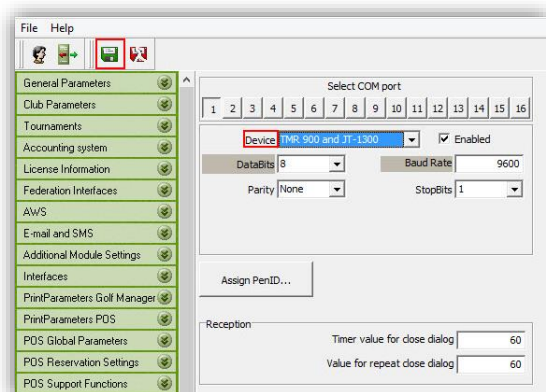
12. Click on “Switch device” .



13. From the list above, choose the com-port to which the waiter lock is attached. Click in the field “Enabled”.



14. Under “Device” choose “TMR 900” and save your input by clicking on the green disc-symbol in the toolbar.



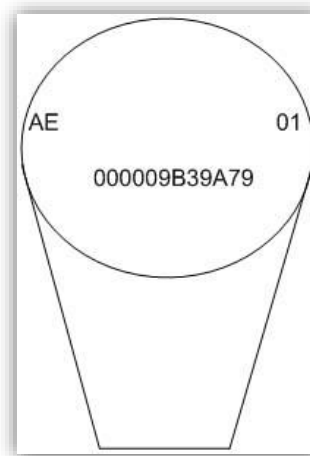
Albatros Waiter Lock for the Restaurant

Configuration and Instruction for Start-up

6 [8]

15. Now, click on the button "Assign PenID".

Key	Name	TMR ID
1	ADMINISTRATOR	
16	AlbOnline	
30	B. Meyer	
2	BENUTZER	
28	Billi	
22	Bob	
31	C. Christmann	
20	Ch. Spichall	
19	D. Feuerstein	
14	I. Milt	
18	M. Jäger	
21	M. Pfeiffer	
29	Petra	
26	Sabine	AE000009B39A7901
25	Sabrina	



16. Choose the name to which you want to assign a key and click into the field "TMR ID".

17. Turn the key around so that you can read the code on the metal. Write the code down in the field "TMR ID".

18. Assign all keys to the respective users and exit the window by clicking on "Ok".

19. Exit the Albatros Administration and start the Restaurant Module. You always have to log on before you can use the keys.

20. Place the key on the waiter lock. All necessary buttons are now activated. As soon as you remove the key, the buttons will be deactivated.

! Attention! In the waiter lock mode, you will not be able to log on to the software as usual. All names without a key will no longer be visible in the Albatros Restaurant Module.

Albatros Waiter Lock for the Restaurant

Configuration and Instruction for Start-up

7 [8]

3.0 Specifications

Connectivity:	RS-232 interface
Adapter:	USB-com adapter
RS-232 Parameters:	9600 baud, 8 data bits, 1 stop bit, no parity External power supply required (included)
Size:	120 x 28 x 82 mm (W x H x D)
Weight:	150 g without base plate
Power Consumption:	300 mA
Environment:	0-50 °C at 20-85 % relative humidity
Reading Technique:	Magnetic contact
Storage Device:	Dallas Chip
Key Number:	16-digit number set by manufacturer
Programming:	Only via RS-232 Only with 32-bit Windows operating system
Data Transfer:	- When placing key on device - When removing key from device Data string can be freely programmed
Included in Delivery:	1) Kelloxx Waiter Lock TMR 900 1) Jarltech Waiter Lock 1300-s/sw 2) Cable for RS-232 connectivity 3) Cable for power supply 12 Volt / PC 4) Cable for connectivity of keyboard wedges 5) Magnetic chips